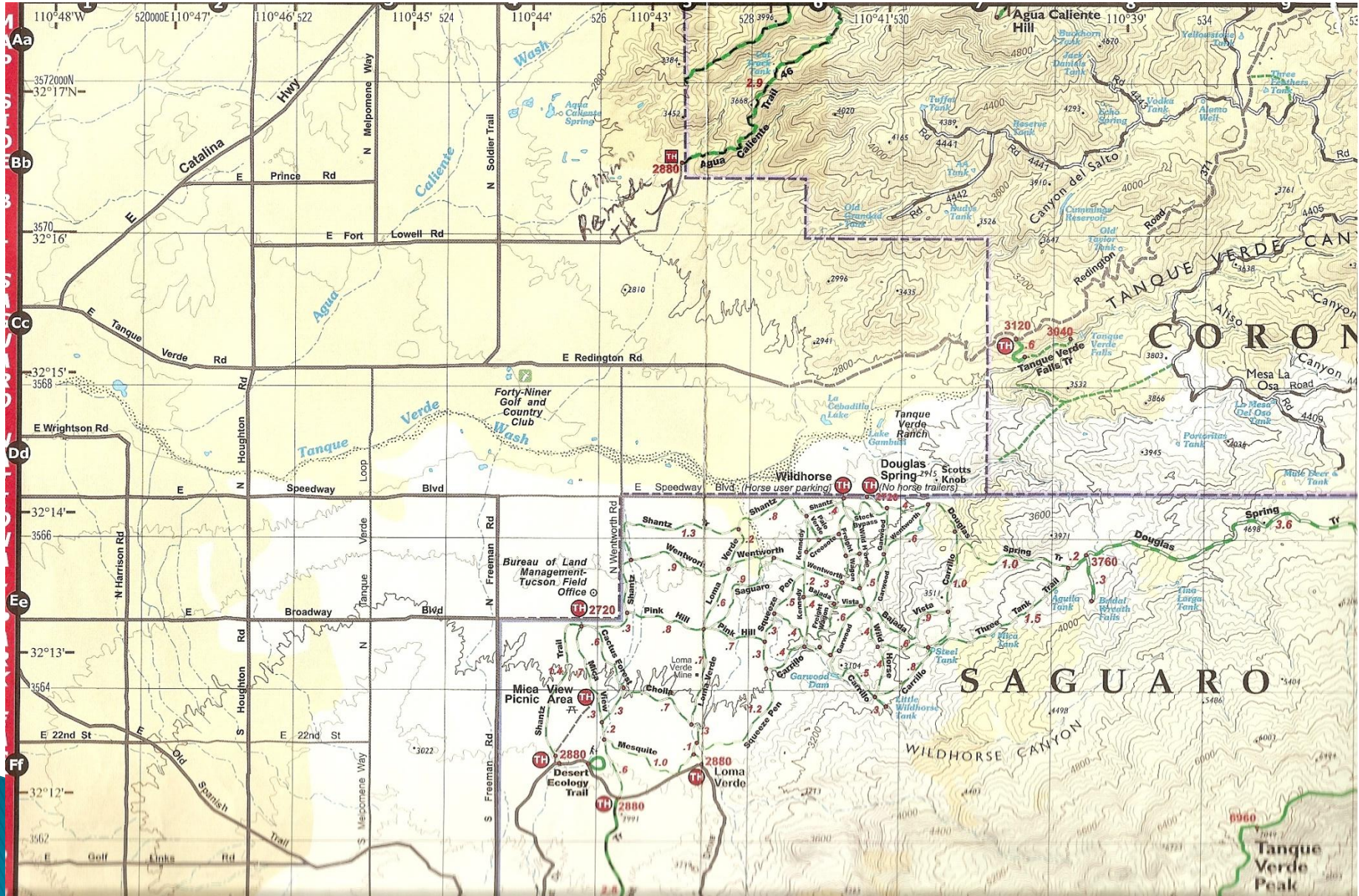


# Europe UTM Zones



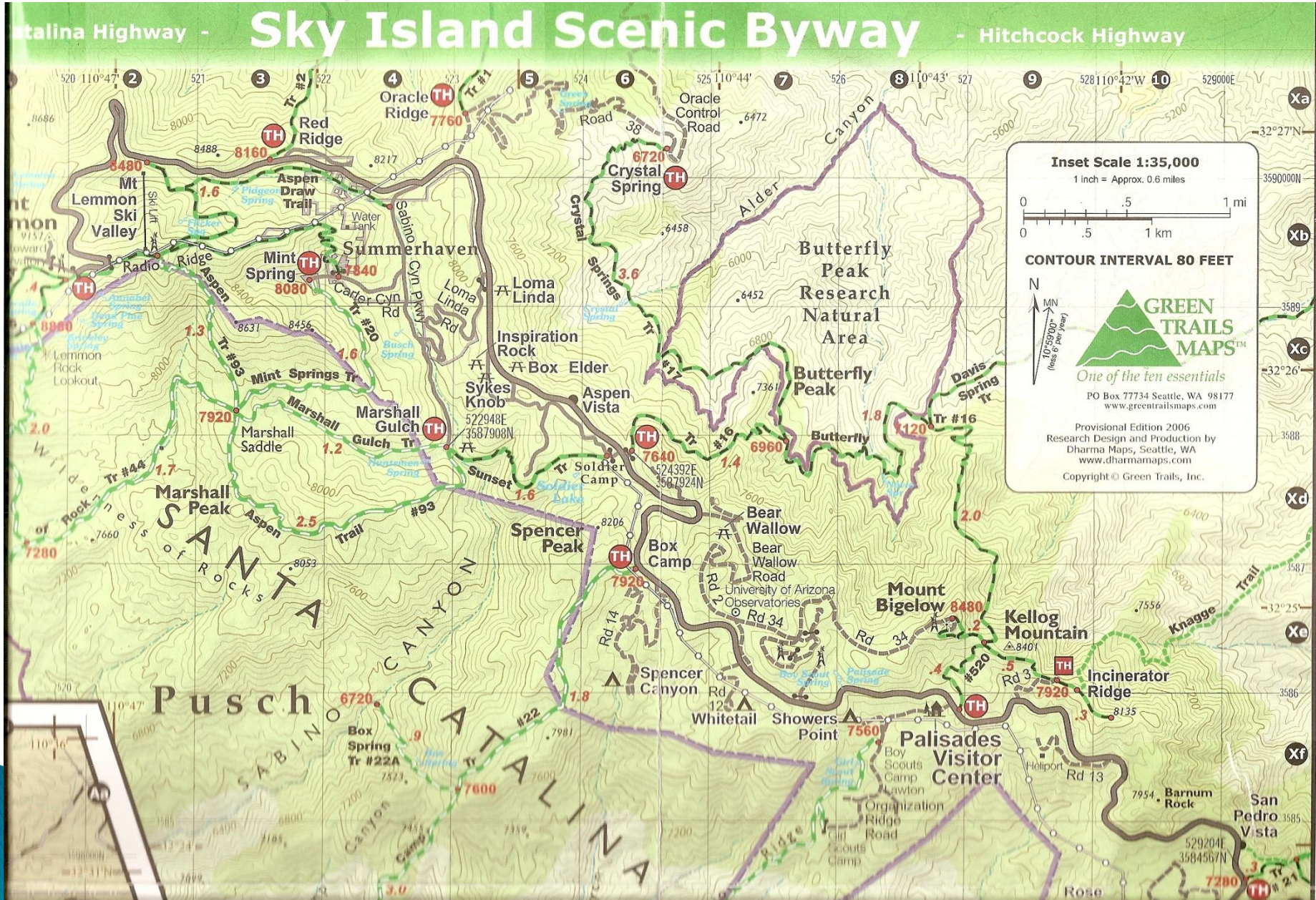


# Green Trails Map - Saguaro East (NW corner)

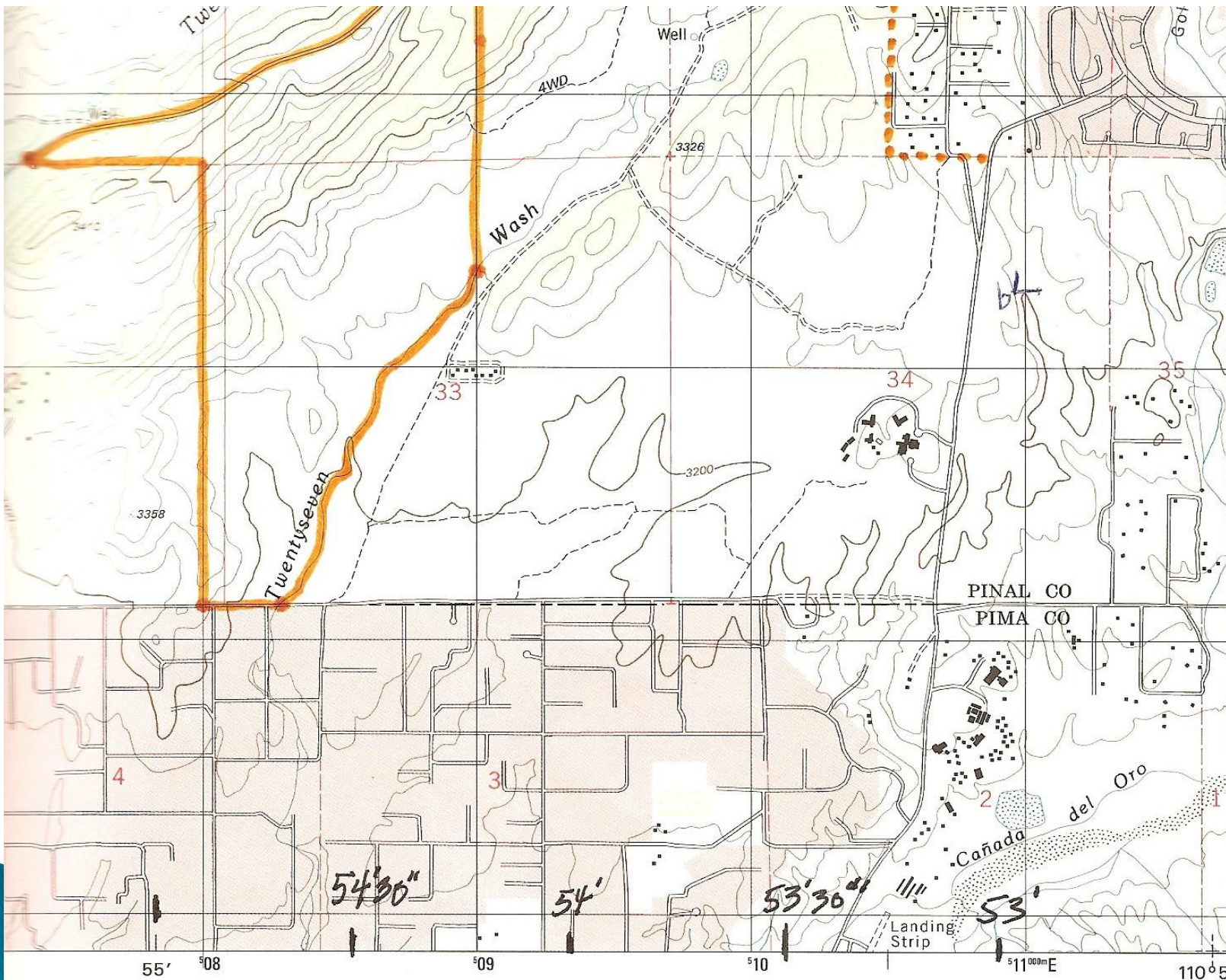




# Green Trails Map - Santa Catalinas Mt Lemmon







3599

3598

3597

359600mN

32°30' 00"

31'30"

31'00"

30'30"

54'30"

54'

53'30"

53'

55' 58

09

10

11 00m E

110°52'30"

PINAL CO

PIMA CO

Two

Well of

4WD

Wash

Twentyseven

Cañada del Oro

Landing Strip

Go

33

3200

34

35

4

3

2

1

55' 58

09

10

11 00m E

110°52'30"

PINAL CO

PIMA CO

Two

Well of

4WD

Wash

Twentyseven

Cañada del Oro

Landing Strip

Go

33

3200

34

35

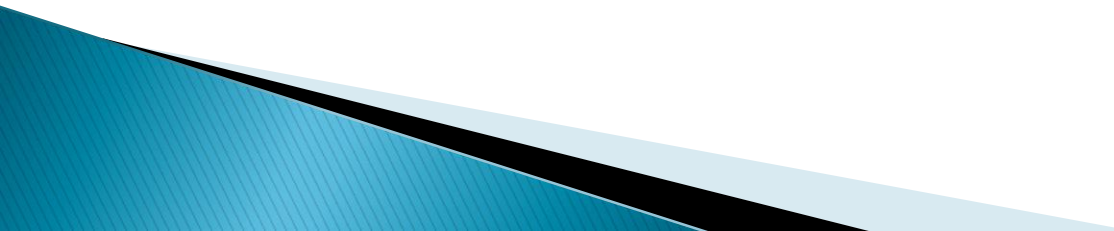
4

3

2

1

# Handouts

- ▶ USGS FAQs
  - ▶ Wikipedia article on UTM
  - ▶ Article on Using GPS from *Backpacker Magazine*
  - ▶ Various maps
- 



Ambulance drivers of England's North East Ambulance Service are no longer allowed to rely solely on their GPS systems anymore, after a number of GPS errors led to frequent delays getting to patients



# Practical Application

- ▶ Field trips to use maps and GPS on actual hikes

Back in January 2008, a Bedford Hills, NY man followed his GPS system's directions directly onto a train track... while a train was approaching. Nine months later, another man followed his GPS onto the exact same tracks. Both men escaped from each incident, but their cars weren't so lucky.





