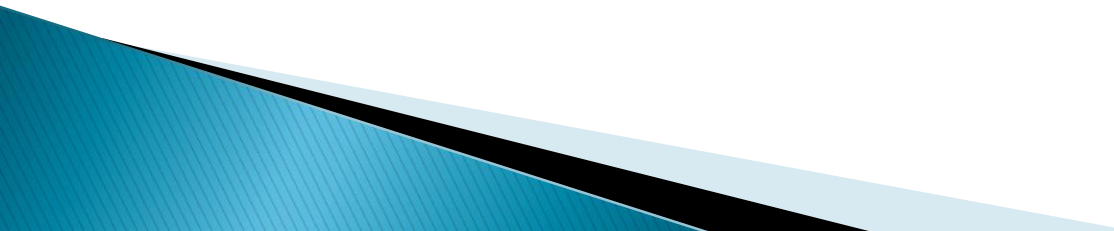
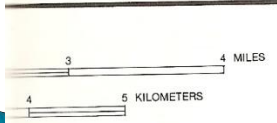
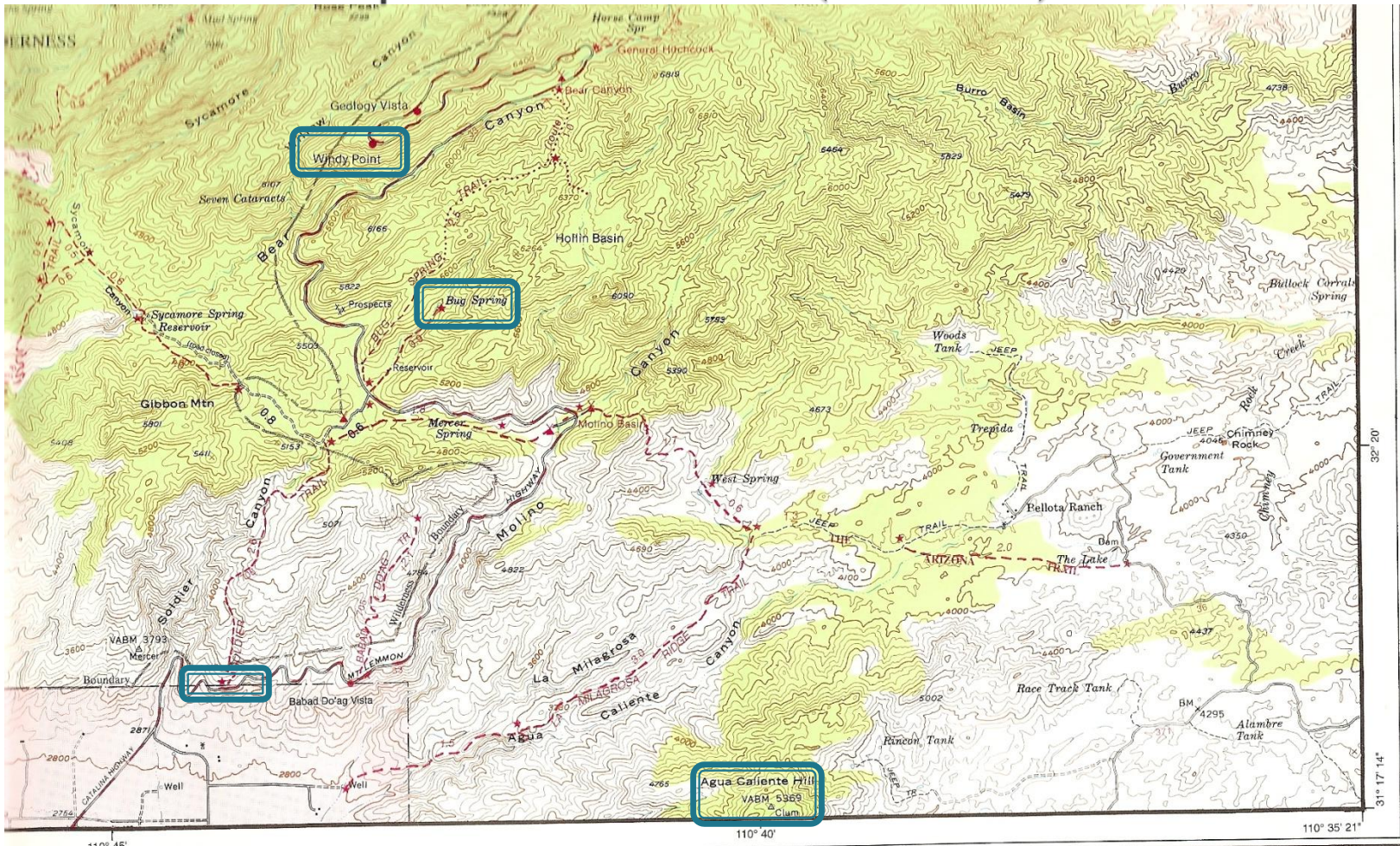


# Exercises for Lat Lon

- ▶ Determine the locations of several points using Lat Lon coordinates
  - ▶ Follow up with on-screen location answer, provide “over-the-shoulder” help by guides, who have “Cheat Sheets”
  - ▶ Plot locations on a map using coordinates such as those provided by your GPS
- 

# Trail and Rec Map - Santa Catalinas (SE corner)



**ROAD AND TRAIL CLASSIFICATION**

Interstate Highway		Unimproved dirt	
Heavy duty		Jeep trail	
Medium duty		Foot trail	
Light duty		Route	

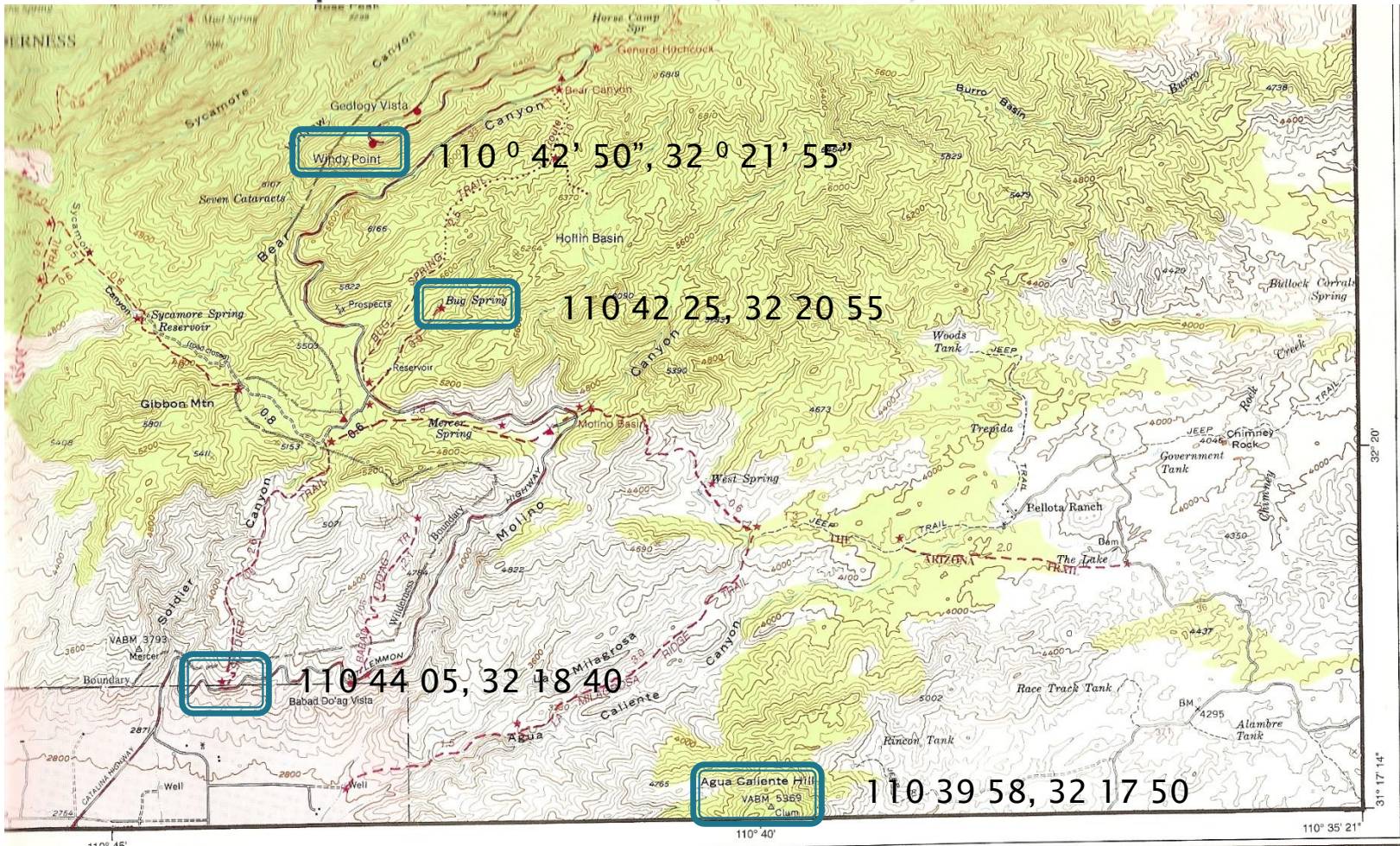
Edited and Published by RAINBOW EXPEDITIONS, INC.  
 915 S. Sherwood Village Drive  
 Tucson, Arizona 85710  
 Phone (520) 298-2731

Printed in Tucson, Arizona by Post Litho Printing  
 Copyright © 1999 by Rainbow Expeditions, Inc.

**SANTA CATALINA MOUNTAINS, ARIZONA**  
 11th Edition 1999  
 Printed on Recycled Paper



# Trail and Rec Map - Santa Catalinas (SE corner)



ROAD AND TRAIL CLASSIFICATION

Interstate Highway	Unimproved dirt
Heavy duty	Jeep trail
Medium duty	Foot trail
Light duty	Route

Edited and Published by RAINBOW EXPEDITIONS, INC.  
 915 S. Sherwood Village Drive  
 Tucson, Arizona 85710  
 Phone (520) 298-2731

Printed in Tucson, Arizona by Post Litho Printing  
 Copyright © 1999 by Rainbow Expeditions, Inc.

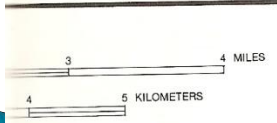
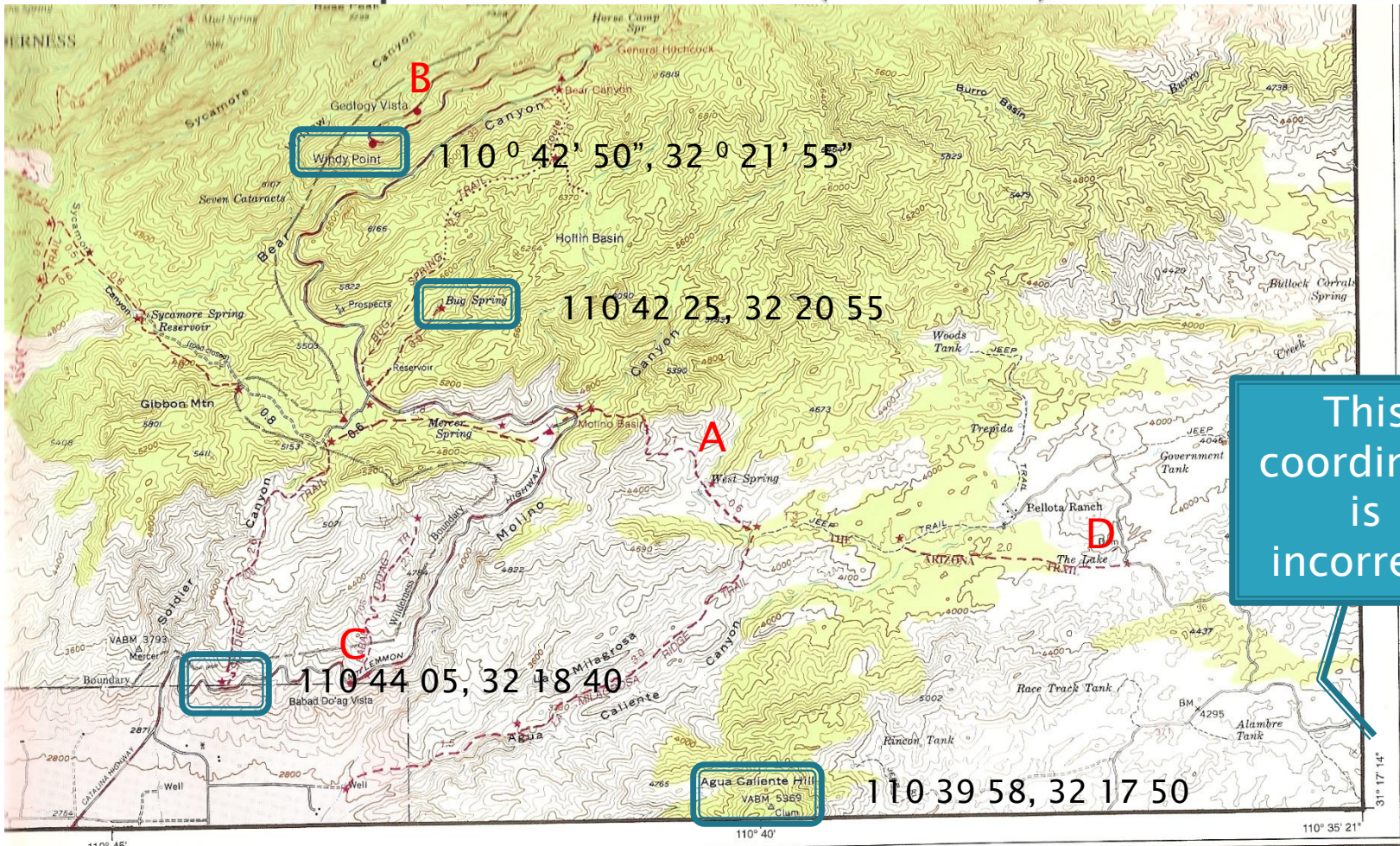
SANTA CATALINA MOUNTAINS, ARIZONA  
 11th Edition 1999  
 Printed on Recycled Paper

# Plot these coordinates on Trail & Recreation Map

- ▶ A – 110° 40' 20", 32° 19' 45"
- ▶ B – 110 42 30, 32 22 05
- ▶ C – 110 43 05, 32 18 35
- ▶ D – 110 37 15, 32 19 20



# Trail and Rec Map - Santa Catalinas (SE corner)



ROAD AND TRAIL CLASSIFICATION

Interstate Highway	Unimproved dirt
Heavy duty	Jeep trail
Medium duty	Foot trail
Light duty	Route

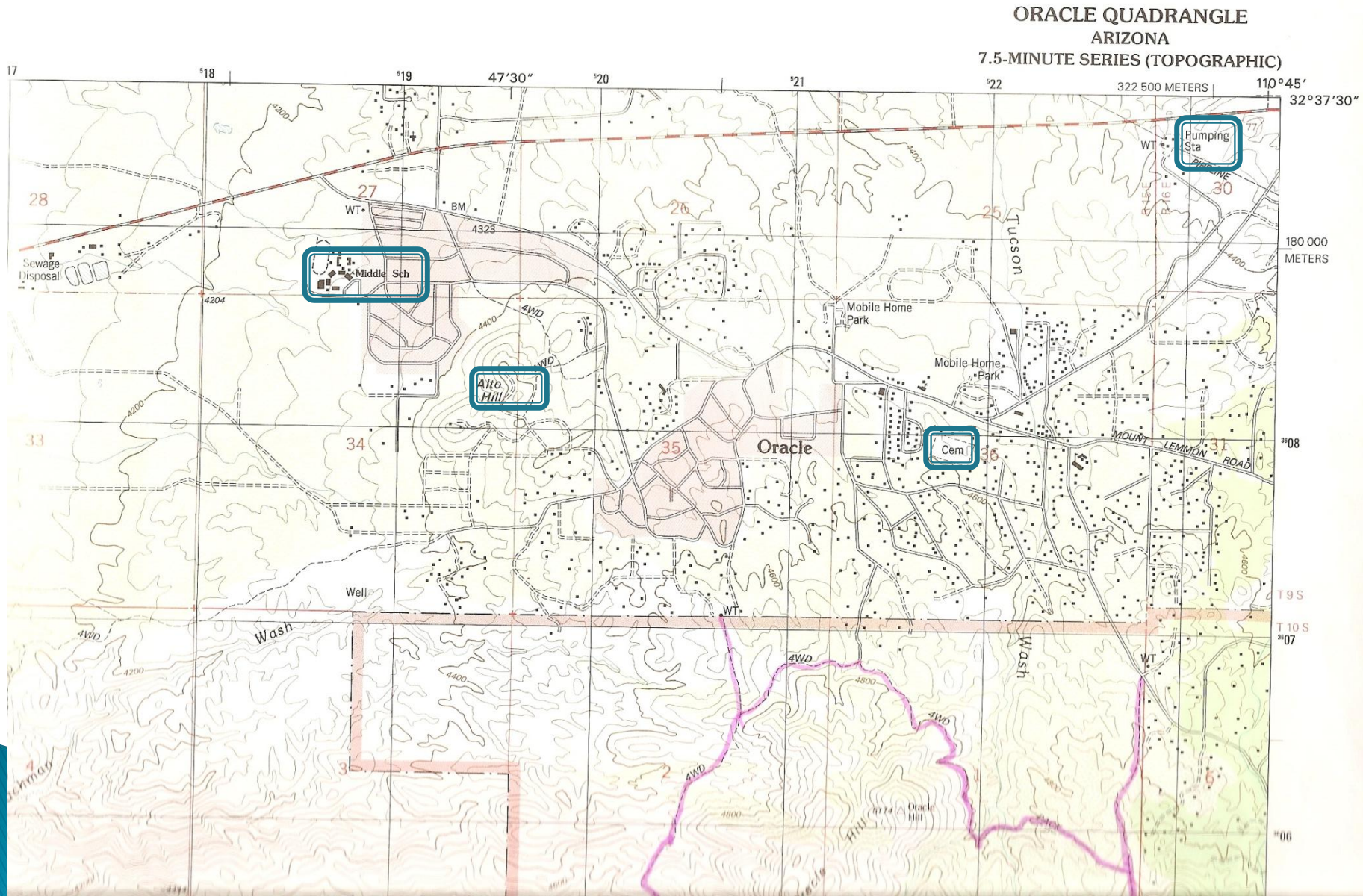
Edited and Published by RAINBOW EXPEDITIONS, INC.  
 915 S. Sherwood Village Drive  
 Tucson, Arizona 85710  
 Phone (520) 298-2731

Printed in Tucson, Arizona by Post Litho Printing  
 Copyright © 1999 by Rainbow Expeditions, Inc.

SANTA CATALINA MOUNTAINS, ARIZONA  
 11th Edition 1999  
 Printed on Recycled Paper



# USGS Oracle Quad (NE corner)







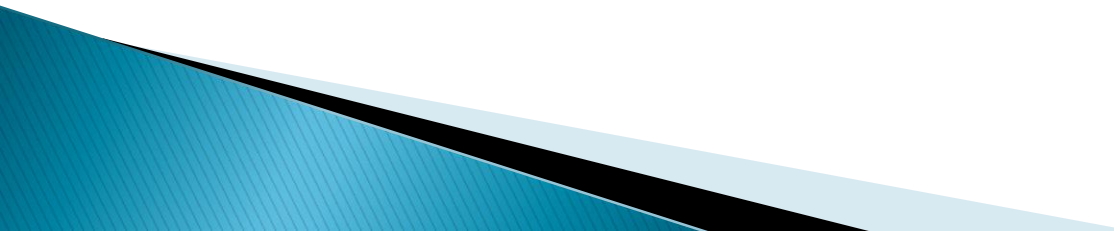
# Plot these coordinates on USGS Oracle Quad

- ▶ A -  $110^{\circ} 45' 25''$ ,  $32^{\circ} 36' 03''$
- ▶ B - 110 46 25, 32 36 50
- ▶ C - 110 46 15, 32 35 42
- ▶ D - 110 48 10, 32 37 15



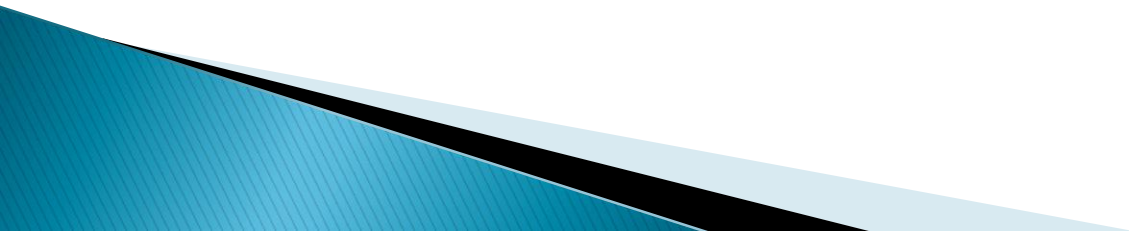


# Google Earth Demonstration

- ▶ Mike Schroer
  - ▶ 30 minutes
  - ▶ Focus is on downloading from internet site and use of Google Earth to produce a maps/displays/profiles usable to hikers
  - ▶ Brief display of some Google Earth features
  - ▶ Uses data available from Arizona Trail Assoc. and HikeArizona.com
- 



# End of Day 1



# Plot these coordinates on Trail & Recreation Map (Cheat Sheet)

- ▶ A – 110° 40' 20", 32° 19' 45" West Spring
- ▶ B – 110 42 30, 32 22 05 Geology Vista
- ▶ C – 110 43 05, 32 18 35 Babab Do'ag TH
- ▶ D – 110 37 15, 32 19 20 The Lake @  
Belotta Ranch



# Plot these coordinates on Oracle Quad (Cheat Sheet)

- ▶ A - 110 ° 45' 25", 32 ° 36' 03" Water Tower # 1
- ▶ B - 110 46 25, 32 36 50 Mobile Home Park # 1
- ▶ C - 110 46 15, 32 35 42 Oracle Hill
- ▶ D - 110 48 10, 32 37 15 Intersection of Rt 77 and Oracle Turnoff